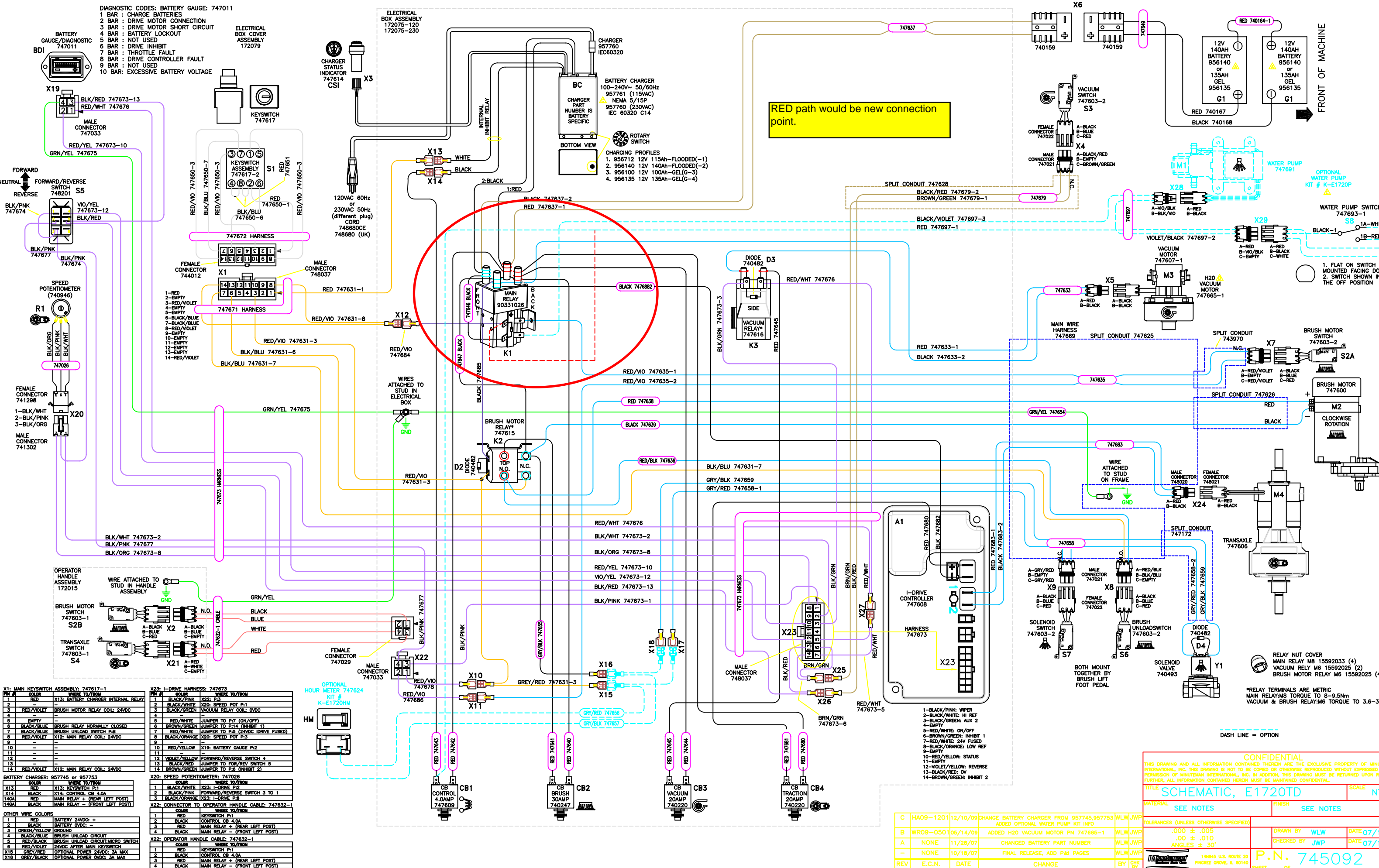


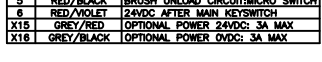
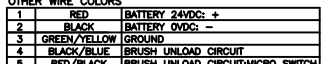
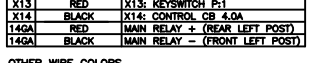
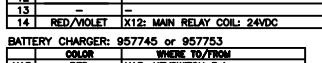
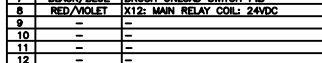
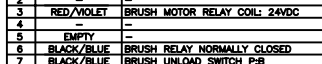
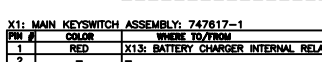
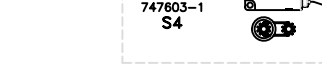
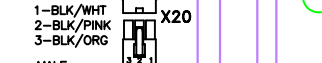
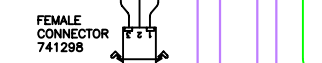
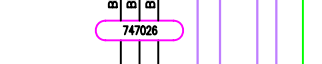
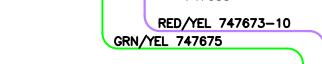
715678: DIAGNOSTIC CODE DECAL

DIAGNOSTIC CODES: BATTERY GAUGE: 747011

- 1 BAR : CHARGE BATTERIES
- 2 BAR : DRIVE MOTOR CONNECTION
- 3 BAR : DRIVE MOTOR SHORT CIRCUIT
- 4 BAR : BATTERY LOCKOUT
- 5 BAR : NOT USED
- 6 BAR : DRIVE INHIBIT
- 7 BAR : THROTTLE FAULT
- 8 BAR : DRIVE CONTROLLER FAULT
- 9 BAR : NOT USED
- 10 BAR : EXCESSIVE BATTERY VOLTAGE



RED path would be new connection point.



PRN #	COLOR	WHERE TO/FROM
1	RED	X13: BATTERY CHARGER INTERNAL RELAY
2	RED	X13: KEYSWITCH P1-1
3	RED/VIOLET	BRUSH MOTOR RELAY COIL: 24VDC
4	EMPTY	
5	BLACK/BLUE	BRUSH RELAY NORMALLY CLOSED
6	BLACK/BLUE	BRUSH UNLOAD SWITCH P-8
7	RED/VIOLET	X12: MAIN RELAY COIL: 24VDC
8	BLACK/ORG	X20: SPEED POT P-3
9	---	---
10	---	---
11	---	---
12	---	---
13	---	---
14	RED/VIOLET	X12: MAIN RELAY COIL: 24VDC

PRN #	COLOR	WHERE TO/FROM
1	BLACK/PINK	X22: I-DRIVE P-2
2	BLACK/WHITE	X22: I-DRIVE P-3
3	BLACK/ORG	X22: I-DRIVE P-8
4	BLACK	MAIN RELAY - (FRONT LEFT POST)

PRN #	COLOR	WHERE TO/FROM
1	RED	KEYSWITCH P1-1
2	BLACK	CONTROL CB 4.0A
3	RED	MAIN RELAY + (REAR LEFT POST)
4	BLACK	MAIN RELAY - (FRONT LEFT POST)

PRN #	COLOR	WHERE TO/FROM
1	RED	KEYSWITCH P1-1
2	BLACK	CONTROL CB 4.0A
3	RED	MAIN RELAY + (REAR LEFT POST)
4	BLACK	MAIN RELAY - (FRONT LEFT POST)

PRN #	COLOR	WHERE TO/FROM
1	RED	KEYSWITCH P1-1
2	BLACK	CONTROL CB 4.0A
3	RED	MAIN RELAY + (REAR LEFT POST)
4	BLACK	MAIN RELAY - (FRONT LEFT POST)

PRN #	COLOR	WHERE TO/FROM
1	BLACK/WHITE	X23: I-DRIVE P-2
2	BLACK/PINK	X23: FORWARD/REVERSE SWITCH 3 TO 1
3	BLACK/ORG	X23: I-DRIVE P-8

PRN #	COLOR	WHERE TO/FROM
1	RED	KEYSWITCH P1-1
2	BLACK	CONTROL CB 4.0A
3	RED	MAIN RELAY + (REAR LEFT POST)
4	BLACK	MAIN RELAY - (FRONT LEFT POST)

PRN #	COLOR	WHERE TO/FROM
1	RED	KEYSWITCH P1-1
2	BLACK	CONTROL CB 4.0A
3	RED	MAIN RELAY + (REAR LEFT POST)
4	BLACK	MAIN RELAY - (FRONT LEFT POST)

PRN #	COLOR	WHERE TO/FROM
1	RED	KEYSWITCH P1-1
2	BLACK	CONTROL CB 4.0A
3	RED	MAIN RELAY + (REAR LEFT POST)
4	BLACK	MAIN RELAY - (FRONT LEFT POST)

PRN #	COLOR	WHERE TO/FROM
1	RED	KEYSWITCH P1-1
2	BLACK	CONTROL CB 4.0A
3	RED	MAIN RELAY + (REAR LEFT POST)
4	BLACK	MAIN RELAY - (FRONT LEFT POST)

PRN #	COLOR	WHERE TO/FROM
1	RED	KEYSWITCH P1-1
2	BLACK	CONTROL CB 4.0A
3	RED	MAIN RELAY + (REAR LEFT POST)
4	BLACK	MAIN RELAY - (FRONT LEFT POST)

PRN #	COLOR	WHERE TO/FROM
1	BLACK/PINK	WIPER
2	BLACK/WHITE	H1 REF
3	BLACK/GREEN	AUX 2
4	EMPTY	
5	RED/WHITE	ON/OFF
6	BROWN/GREEN	INHIBIT 1
7	RED/WHITE	24V FUSED
8	BLACK/ORG	LOW REF
9	EMPTY	
10	RED/YELLOW	STATUS
11	EMPTY	
12	VIOLET/YELLOW	REVERSE
13	BLACK/RED	ON
14	BROWN/GREEN	INHIBIT 2

PRN #	COLOR	WHERE TO/FROM
1	RED	KEYSWITCH P1-1
2	BLACK	CONTROL CB 4.0A
3	RED	MAIN RELAY + (REAR LEFT POST)
4	BLACK	MAIN RELAY - (FRONT LEFT POST)

PRN #	COLOR	WHERE TO/FROM
1	RED	KEYSWITCH P1-1
2	BLACK	CONTROL CB 4.0A
3	RED	MAIN RELAY + (REAR LEFT POST)
4	BLACK	MAIN RELAY - (FRONT LEFT POST)

PRN #	COLOR	WHERE TO/FROM
1	RED	KEYSWITCH P1-1
2	BLACK	CONTROL CB 4.0A
3	RED	MAIN RELAY + (REAR LEFT POST)
4	BLACK	MAIN RELAY - (FRONT LEFT POST)

PRN #	COLOR	WHERE TO/FROM
1	RED	KEYSWITCH P1-1
2	BLACK	CONTROL CB 4.0A
3	RED	MAIN RELAY + (REAR LEFT POST)
4	BLACK	MAIN RELAY - (FRONT LEFT POST)

PRN #	COLOR	WHERE TO/FROM
1	RED	KEYSWITCH P1-1
2	BLACK	CONTROL CB 4.0A
3	RED	MAIN RELAY + (REAR LEFT POST)
4	BLACK	MAIN RELAY - (FRONT LEFT POST)

**CONFIDENTIAL**

THIS DRAWING AND ALL INFORMATION CONTAINED THEREIN ARE THE EXCLUSIVE PROPERTY OF MINUTEMAN INTERNATIONAL, INC. THIS DRAWING IS NOT TO BE COPIED OR OTHERWISE REPRODUCED WITHOUT EXPRESSED WRITTEN PERMISSION OF MINUTEMAN INTERNATIONAL, INC. IN ADDITION, THIS DRAWING MUST BE RETURNED UPON REQUEST. FURTHER, ALL INFORMATION CONTAINED HEREIN MUST BE MAINTAINED CONFIDENTIAL.

TITLE: **SCHEMATIC, E1720TD** SCALE: **NTS**

MATERIAL: SEE NOTES FINISH: SEE NOTES

TOLERANCES (UNLESS OTHERWISE SPECIFIED):  
 .000 ± .005  
 .00 ± .010  
 ANGLES ± 30°

DRAWN BY: **WLW** DATE: **07/13/09**  
 CHECKED BY: **JWP** DATE: **07/19/09**

14845 U.S. ROUTE 20  
 PHOENIX, AZ 85044

**P.N. 745092**

REV: E.C.N. DATE CHANGE BY: CHK BY: